



RP

Series

Features

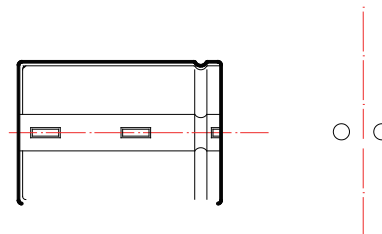
- High ripple current, Smaller size, Load life of 2000 hours at 105 °C, Used in Inverter welding machine.
- RoHS Compliant Adapted to the RoHS directive.



Specifications

Items	Performance Characteristics		
Operating Temperature Range	-25~ +105		
Rated Voltage Range	200- 450V		
Capacitance Tolerance	± 20% (120Hz, +20°C)		
Leakage Current	I ≤ 0.01CV (μA) 1.5mA (5%) at 20 °C, after 5 minutes, Whichever is smaller		
(tg) Dissipation Factor (+20 °C, 120Hz)	Rated voltage(V)	200V ~ 250V	400- 450V
	tg	0.15	0.18
Temperature Characteristics (Impedance ratio at 120Hz)	U _R (V)	200V ~ 250V	400- 450V
	Z-25 /Z+20	4	8
Load Life	+105 °C	2000 hours	16 hours
	After applying rated voltage with specified ripple current for 2000 hours at +105 °C and then resumed for 16 hours: Capacitance change ±20% ±20% of the initial measured value Leakage current Initial specified value Dissipation factor 2 2 times of the initial specified value		
Shelf Life	+105 °C	1000 hours	30 minutes
	After storage for 1000 hours at +105 °C, U _R to be applied for 30 minutes and then resumed for 16 hours: Capacitance change ±20% ±20% of the initial measured value Leakage current Initial specified value Dissipation factor 2 2 times of the initial specified value		

Case Table



Unit: mm

Frequency Coefficient

U _R (V) \ (Hz)	50	120	300	1K	10K	100K
200- 450	0.80	1.00	1.20	1.30	1.41	1.43

Capacitance change 20%

±0% of

ed value